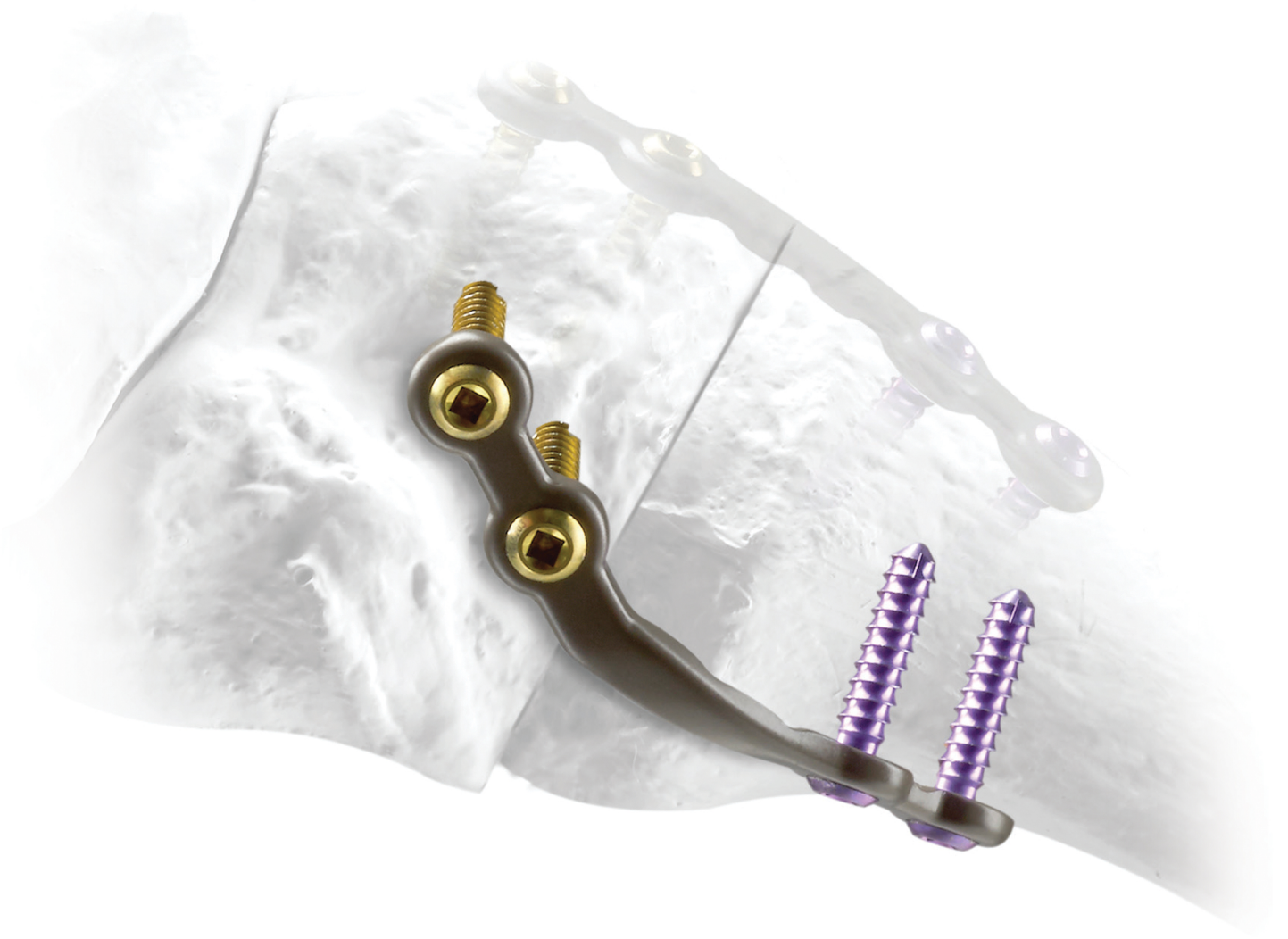


# Plantar Python<sup>®</sup>

Anatomic Tension-Side Plate



Plantar Fixation for 1<sup>st</sup> TMT Fusion. *Simplified.*

**TREACE**<sup>®</sup>  
Medical Concepts, Inc.

# Plantar Python®

## Anatomic Tension-Side Plate



### Easy-to-Apply Tension-Side Fixation

Developed for exclusive use with the Lapiplasty® System, the Plantar Python® Plate is uniquely precontoured to provide easy-to-apply, plantar-based fixation for 1st TMT fusion. Return your patients to their active lifestyle with confidence via the combined power of Biplanar™ Plating with the Plantar Python® Plate.

### Tension-Side Support Through a Standard Incision

The Plantar Python® Plate helical geometry wraps from the medial side of the cuneiform to the plantar surface of the metatarsal, providing the benefits of tension-side fixation, while avoiding the tissue dissection associated with conventional plantar plating.

### The Power of Low-Profile Multiplanar Fixation

Low-profile Biplanar™ Plating provides superior multi-planar strength and endurance compared to an anatomic plate and compression screw construct.<sup>1</sup> And the Plantar Python® tension-side construct provides 103% greater cycles to failure than straight Biplanar™ Plating.<sup>2</sup>

### Precision-Machined for Strength

The Plantar Python® Plate is sculpture-milled on a CNC machine from a solid block of titanium, delivering the same precise anatomic pre-contour on each plate without introducing strength-compromising bending stresses.

1. Dayton P et al. *J Foot Ankle Surg.* 2016; 55:567-71.

2. Dayton P, Hatch DJ, Santrock RD, Smith B. *J Foot Ankle Surg.* 2018.

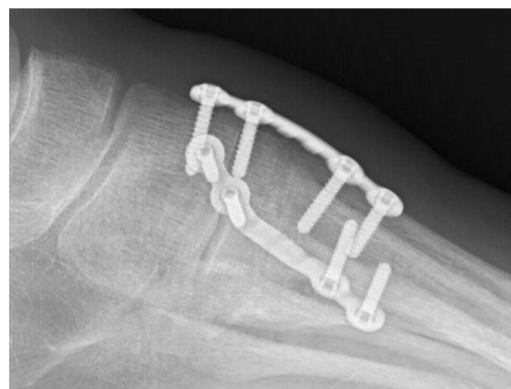
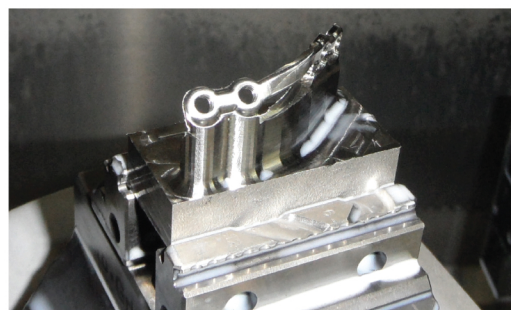


Image courtesy Bret Smith, DO



## Ordering Information

- SD11 Plantar Python® Anatomic Tension-Side Plate - Left
- SD12 Plantar Python® Anatomic Tension-Side Plate - Right

